

Principles of green & public open space design and use:

Density

- ▶ Green space and public open space provide relief in high-density areas, and are particularly important in TOD projects.

Location and Distribution

- ▶ Parks to be located centrally within the community.
- ▶ Ideally parks should be located within 400 m walking distance of residents (COW recommends 95% of residents).

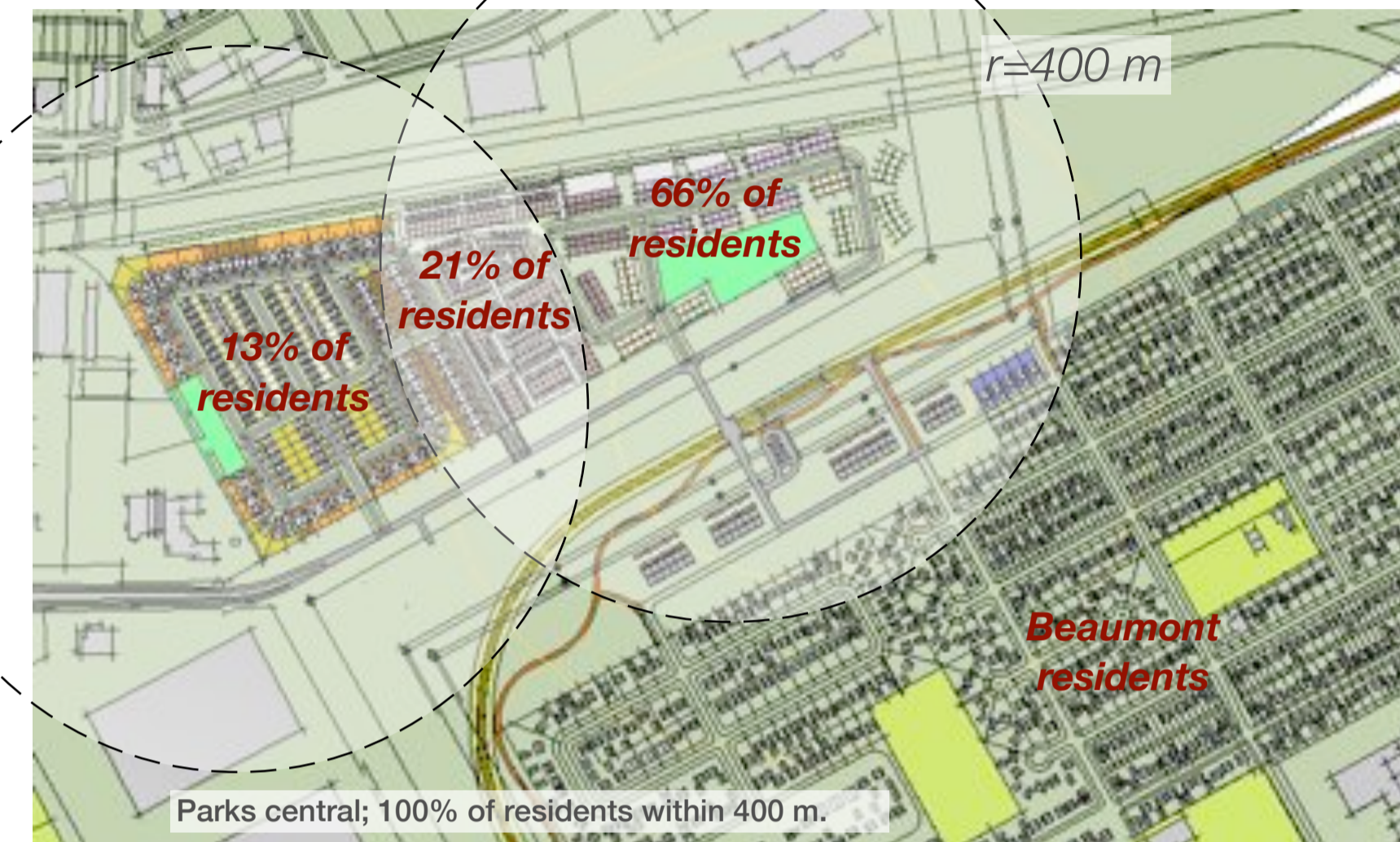
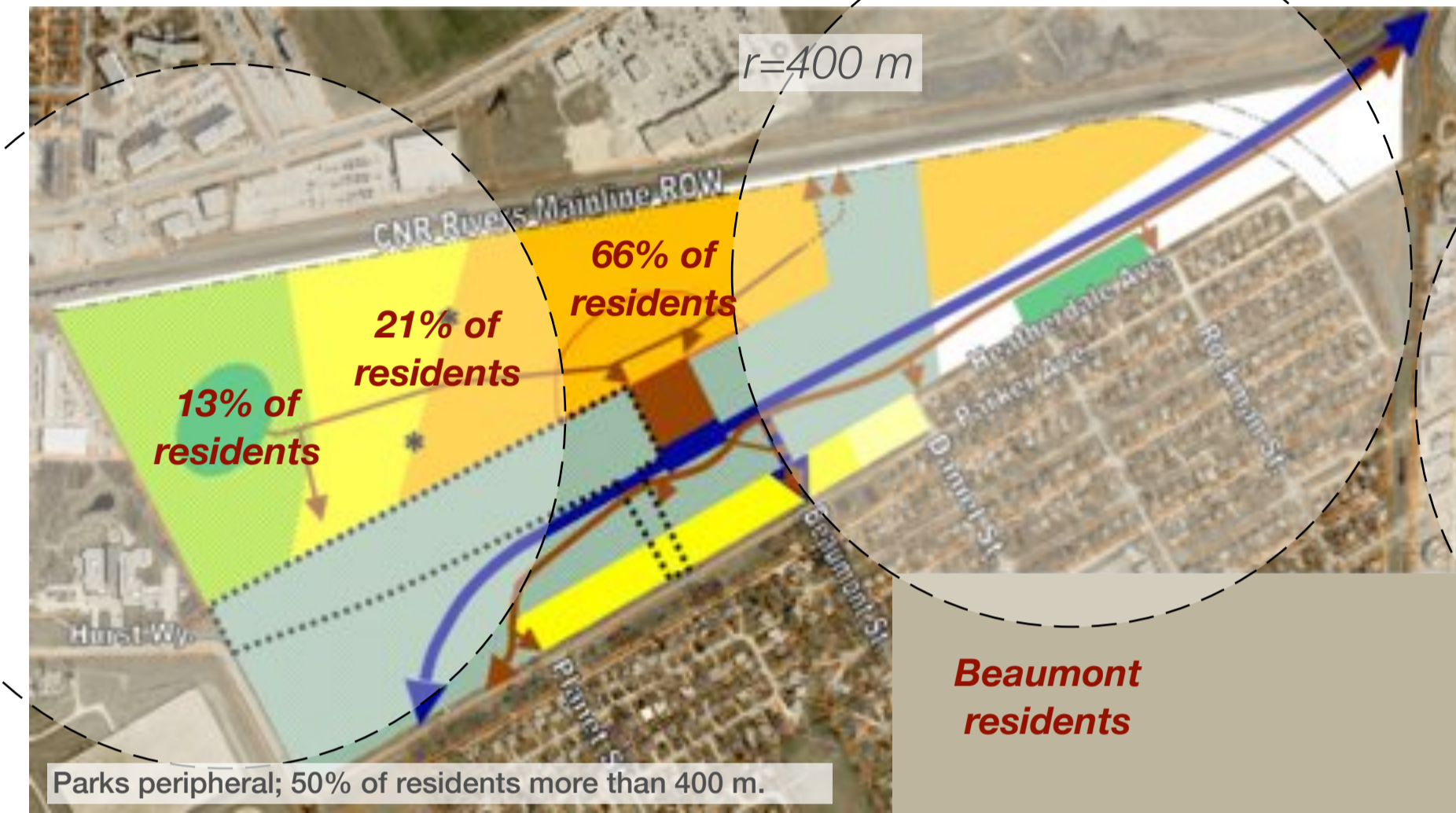
Integration

- ▶ Parks to be integrated into linear parkway, path networks, transit, pedestrian and bike routes.

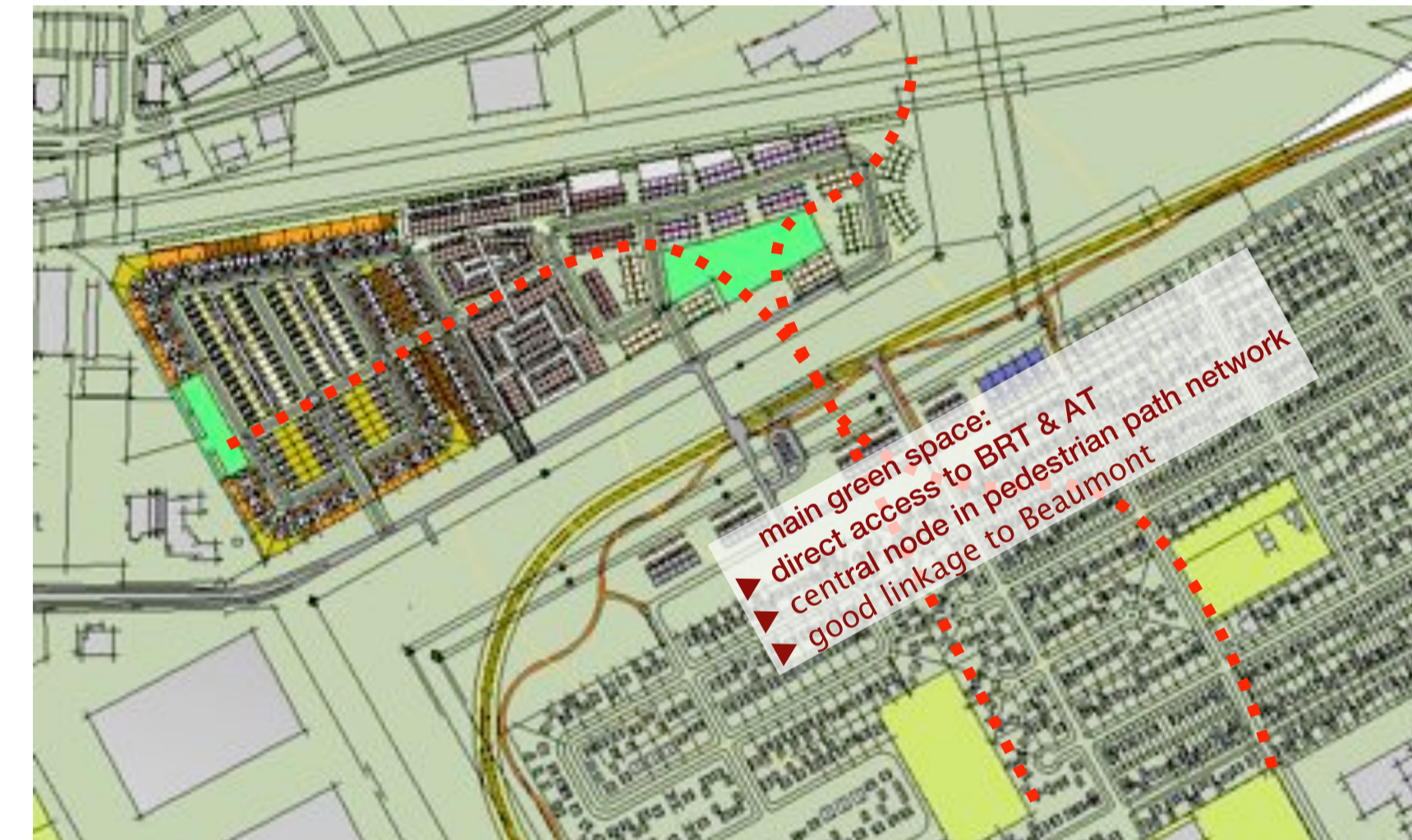
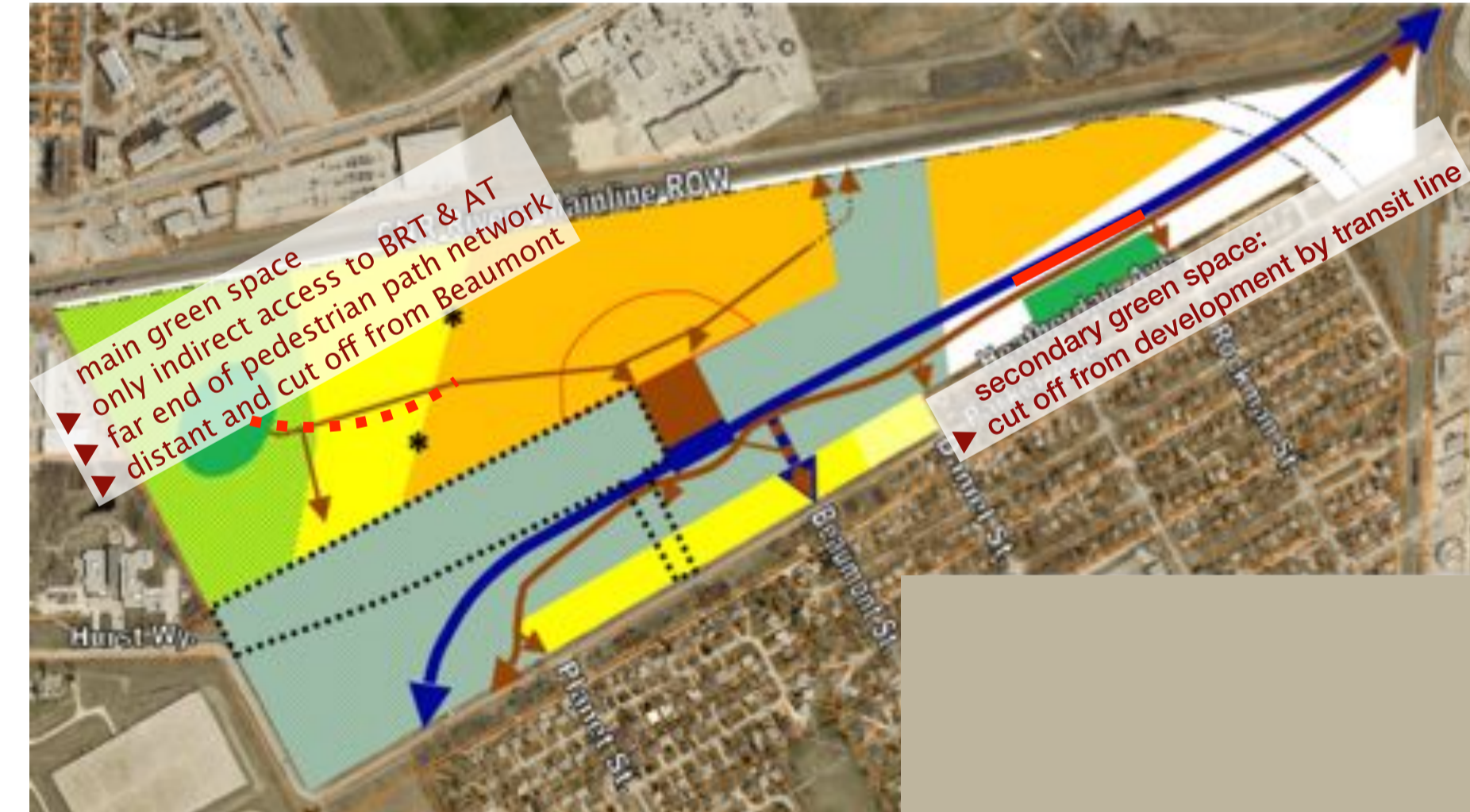
Use and Design

- ▶ Parks to include a balance of active (programmed) and passive / contemplative park space (COW recommends 30% of each in a given park).
- ▶ Maximize visibility (views in from ROW and key spaces), but without limiting sense of character and place / enclosure (built form on most sides).

Location and Distribution



Integration



Use and Design



Precedents of public park space supporting density / high-rise



Precedents of public park space framed by residential

